

Metres

1000

0

100

Metres

18'

51 3000 E

51 4000 E

Oc.Bu.5s

SCANNER

# RIVER HUMBER HOOK DEPOSIT AREA

DEPTHS IN METRES  
SCALE 1 : 2500

SURVEYED BY  
Harbour Master, Humber  
ASSOCIATED BRITISH PORTS  
19th November 2018

Depths are in metres and decimetres reduced to the chart datum given below  
Underlined figures are drying heights in metres and decimetres above chart datum

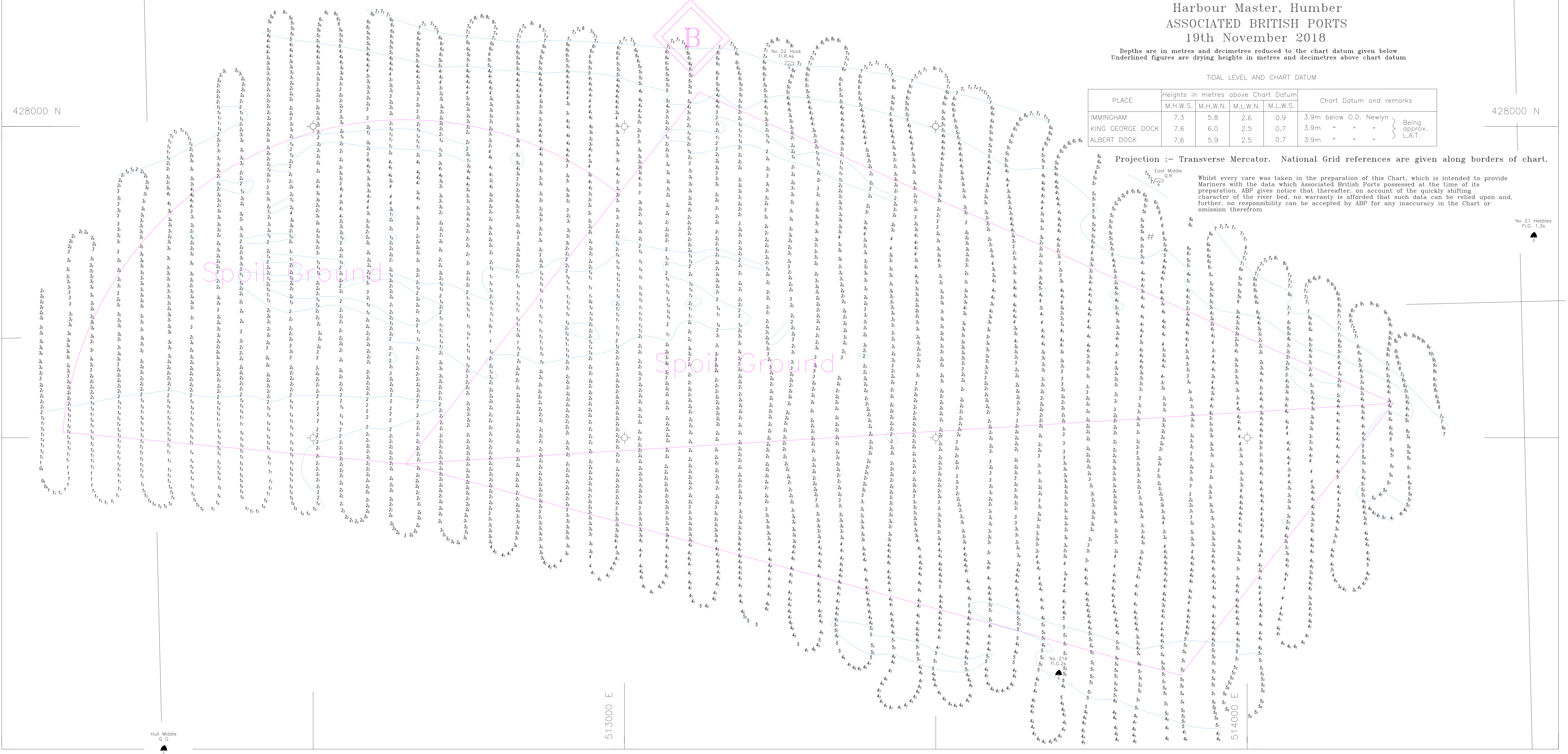
TIDAL LEVEL AND CHART DATUM

| PLACE            | Heights in metres above Chart Datum |          |          |          | Chart Datum and remarks             |
|------------------|-------------------------------------|----------|----------|----------|-------------------------------------|
|                  | M.H.W.S.                            | M.H.W.N. | M.L.W.N. | M.L.W.S. |                                     |
| IMMINCHAM        | 7.3                                 | 5.8      | 2.6      | 0.9      | 3.9m below O.D. Newlyn              |
| KING GEORGE DOCK | 7.6                                 | 6.0      | 2.5      | 0.7      | 3.9m " " " " } Being approx. L.A.T. |
| ALBERT DOCK      | 7.6                                 | 5.9      | 2.5      | 0.7      | 3.9m " " " " }                      |

Projection :- Transverse Mercator. National Grid references are given along borders of chart.

Whilst every care was taken in the preparation of this Chart, which is intended to provide Mariners with the data which Associated British Ports possessed at the time of its preparation, ABP gives notice that thereafter, on account of the quickly shifting character of the river bed, no warranty is afforded that such data can be relied upon and, further, no responsibility can be accepted by ABP for any inaccuracy in the Chart or omission therefrom

No. 21 Hebbles  
P.C. 1.35



428000 N

428000 N

44'

44'

51 3000 E

51 4000 E

Hull Middle  
O.C.

18'